

Pima County Testing Blitz

Objective

Pima County to support a testing blitz throughout the county with the help of HHS and AzDEMA. The goal is to do up to 20,000 tests throughout Pima County. The County/City responsibility is to select locations, staff operations, provide logistical support, and store test items until courier arrives. The contracted test facilitator will be responsible for notification of results.

Below are the identified locations with days of tentative operation and the plan for each location.

Locations and Planned Date of Operation

• Ajo / Sells	Tuesday, August 11 th 1000-1500
• Three Points	Wednesday, August 12 th 1400-1800
• Marana / Avra Valley / Picture Rocks	Thursday, August 13 th 1000-1800
• Green Valley / Sahuarita	Friday, August 14 th 0900-1600
• Vail / Corona De Tucson	Saturday, August 15 th 1000-1800
• Catalina / Oro Valley	Sunday, August 16 th 1000-1800
• Tucson/Rillito Race Track	Monday, August 17 th 1000-1800
• Tucson/Sunnyside	Tuesday, August 18 th 1000-1800
• Tucson Rodeo Grounds	Wednesday, August 19 th 1000-1800

Testing Site Plan per Location

- Address of sites
- Staffing support
- Logistics needs
- Number of appointments per site
- Operating hours
- Days of operation
- Messaging and communications plan
- Inclement weather plan

Ajo / Sells Testing Site Plan

Address of site

- Ajo High School 111 N Well Rd. Ajo Az 85321

Staffing support

- 2 Sheriff Auxiliary Volunteer for security / traffic management
- 2 Health Dept staff for site management
- 4 volunteers for supply running, registration, general support

Logistics needs

- Signage for entrance, exit, site check in, general messaging, safety
- Traffic cones for lane separation and check points
- 2-4 tents with tie down and shade for workers
- Large coolers for sample storage
- 4 Tables
- 8 chairs
- Hydration and nutritional supplements
- Auxiliary power / generator including power strips, extension cords and other cabling
- 4 Laptops, 2 MiFi, 4 clipboards, pens, paper, 1 large monitor for self-administration instructions and potentially a printer
- First aid and car kit

Number of appointments per site

- Total Population ~3,5000
- 0-600 tests estimate based on 20% of population

Operating hours

- Tuesday, August 11th 1000-1500

Messaging and communications plan

Social media campaign on Facebook, Nextdoor, local radio, municipality newsletter with appointment link for their location. Communications office will be brought in to handle this piece.

Safety and Inclement weather plan

Given the time of year we may experience a monsoon and need to plan accordingly. The remoteness of Ajo will make travel back to Tucson difficult in the event of flooding or heavy rain. The county will work with the local area to secure a storage / safe space in the event of a severe thunderstorm.

A health department staff member will act as safety officer to identify any issues that arise and ensure it is safe to operate. All volunteers will report to this person.

Our public safety liaison will work with the local public safety office to ensure security will be made available for any issues that arise.

Temperature checks will be mandatory for all staff reporting to the testing site. If there are irregularities the person will be retested after sitting in shade for 10 minutes. Persons with continued high temperatures will be asked to leave the premises.

Partners

Pima County Sheriff

Desert Senita Community Health Center

Ajo Gibson Volunteer Fire

Testing Map with Ingress and Egress

- Ajo High School 111 N Well Rd. Ajo AZ 85321



Three Points Testing Site Plan

Address of site

- Robles Junction Community Center, 16150 W Ajo Hwy, Tucson, AZ 85735

Staffing support

- 2 Sheriff Auxiliary Volunteer for security / traffic management
- 2 Health Dept staff for site management
- 4 volunteers for supply running, registration, general support

Logistics needs

- Signage for entrance, exit, site check in, general messaging, safety
- Traffic cones for lane separation and check points
- 2-4 tents with tie down and shade for workers
- Large coolers for sample storage including ice or plug in portable coolers
- 4 Tables
- 8 chairs
- Hydration and nutritional supplements
- Auxiliary power / generator including power strips, extension cords and other cabling
- 4 Laptops, 2 mifi, 4 clipboards, pens, paper, 1 large monitor for self-administration instructions and potentially a printer
- First aid and car kit

Number of appointments per site

- Total Population ~6,000 people
- 0-600 tests estimate based on 10% of population

Operating hours

- Wednesday, August 12th 1400-1800

Messaging and communications plan

Social media campaign on Facebook, Nextdoor, local radio, municipality newsletter with appointment link for their location. Communications office will be brought in to handle this piece.

Safety and Inclement weather plan

Given the time of year we may experience a monsoon and need to plan accordingly. In the event of flooding or heavy rain, the county will work with the community center for access to storage / safe space in the event of a severe thunderstorm.

A health department staff member will act as safety officer to identify any issues that arise and ensure it is safe to operate. All volunteers will report to this person.

Our public safety liaison will work with the Pima County Sheriff's Office to ensure security will be made available for any issues that arise.

Temperature checks will be mandatory for all staff reporting to the testing site. If there are irregularities the person will be retested after sitting in shade for 10 minutes. Persons with continued high temperatures will be asked to leave the premises.

Partners

Pima County Sheriff

United Community Health Center Three Points

Three Points Fire

Testing Map with Ingress and Egress

- Robles Junction Community Center, 16150 W Ajo Hwy, Tucson, AZ 85735



Marana/Avra Valley/Picture Rocks Testing Site Plan

Address of site

- Wheeler Taft Abbett Sr Library, 7800 N Schisler Dr Tucson, AZ 85743

Staffing support

- 2 Sheriff Auxiliary Volunteer for security / traffic management
- 4 Health Dept staff for site management
- 8 volunteers for supply running, registration, general support

Logistics needs

- Signage for entrance, exit, site check in, general messaging, safety
- Traffic cones for lane separation and check points
- 4 tents with tie down and shade for workers
- Large coolers for sample storage including ice or plug in portable coolers
- 6 Tables
- 12 chairs
- Hydration and nutritional supplements
- Auxiliary power / generator including power strips, extension cords and other cabling
- 4 Laptops, 2 mifi, 4 clipboards, pens, paper, 1 large monitor for self-administration instructions and potentially a printer
- First aid and car kit

Number of appointments per site

- Total Population of area ~47,000 people
- 0-2000 tests estimate based on 5% of population

Operating hours

- Thursday, August 13th, 1000-1800

Messaging and communications plan

Social media campaign on Facebook, Nextdoor, local radio, municipality newsletter with appointment link for their location. Communications office will be brought in to handle this piece.

Safety and Inclement weather plan

Given the time of year we may experience a monsoon and need to plan accordingly. In the event of flooding or heavy rain, the county will work with Marana Police Department, Banner University Medicine Primary Care Clinic, and Pima County Sheriff for access to storage / safe space in the event of a severe thunderstorm.

A health department staff member will act as a safety officer to identify any issues that arise and ensure it is safe to operate. All volunteers will report to this person.

Our public safety liaison will work with the Pima County Sheriff's Office and/or Marana Police Department to ensure security will be made available for any issues that arise.

Leman Academy has been notified and will alert parents of potential excess traffic on the day of the event. Excess school traffic is anticipated 1400-1600.

Temperature checks will be mandatory for all staff reporting to the testing site. If there are irregularities the person will be retested after sitting in shade for 10 minutes. Persons with continued high temperatures will be asked to leave the premises.

Partners

Pima County Sheriff

Marana Police Department

Banner – University Medicine Primary Care Clinic

Northwest Fire District

Testing Map with Ingress and Egress

- Wheeler Taft Abbett Sr Library, 7800 N Schisler Dr Tucson, AZ 85743



Green Valley Testing Site Plan

Address of site

- Green Valley Recreation Desert Hills Center, 2980 S Camino Del Sol, Green Valley, AZ 85622

Staffing support

- 2 Sheriff Auxiliary Volunteer for security / traffic management
- 4 Health Dept staff for site management
- 8 volunteers for supply running, registration, general support

Logistics needs

- Signage for entrance, exit, site check in, general messaging, safety
- Traffic cones for lane separation and check points
- 4 tents with tie down and shade for workers
- Large coolers for sample storage including ice or plug in portable coolers
- 6 Tables
- 12 chairs
- Hydration and nutritional supplements
- Auxiliary power / generator including power strips, extension cords and other cabling
- 4 Laptops, 2 MiFi, 4 clipboards, pens, paper, 1 large monitor for self-administration instructions and potentially a printer
- First aid and car kit

Number of appointments per site

- Total Population ~21,000 people
- 0-2000 tests estimate based on 10% of population

Operating hours

- Friday, August 14th 0900-1600

Messaging and communications plan

Social media campaign on Facebook, Nextdoor, local radio, municipality newsletter with appointment link for their location. Communications office will be brought in to handle this piece

Safety and Inclement weather plan

Given the time of year we may experience a monsoon and need to plan accordingly. In the event of flooding or heavy rain, the county will work with Desert Sky Cinema or local community health center for access to storage / safe space in the event of a severe thunderstorm.

A health department staff member will act as safety officer to identify any issues that arise and ensure it is safe to operate. All volunteers will report to this person.

Our public safety liaison will work with the Pima County Sheriff's Office to ensure security will be made available for any issues that arise.

- Green Valley Recreation Desert Hills Center, 2980 S Camino Del Sol, Green Valley, AZ 85622

Vail/Corona de Tucson Testing Site Plan

Address of site

- Pima County Fairgrounds, Thurber Hall, 11300 S Houghton Rd, Tucson AZ 85747

Staffing support

- 2 Sheriff Auxiliary Volunteer for security / traffic management
- 4 Health Dept staff for site management
- 8 volunteers for supply running, registration, general support

Logistics needs

- Signage for entrance, exit, site check in, general messaging, safety
- Traffic cones for lane separation and check points
- 4 tents with tie down and shade for workers
- Large coolers for sample storage including ice or plug in portable coolers
- 6 Tables
- 12 chairs
- Hydration and nutritional supplements
- Auxiliary power / generator including power strips, extension cords and other cabling
- 4 Laptops, 2 MiFi, 4 clipboards, pens, paper, 1 large monitor for self-administration instructions and potentially a printer
- First aid and car kit

Number of appointments per site

- Total Population of area ~47,000 people
- 0-2000 tests estimate based on 5% of population

Operating hours

- Saturday, August 15th 1000-1800

Messaging and communications plan

Social media campaign on Facebook, Nextdoor, local radio, municipality newsletter with appointment link for their location. Communications office will be brought in to handle this piece.

Safety and Inclement weather plan

Given the time of year we may experience a monsoon and need to plan accordingly. In the event of flooding or heavy rain, the county will work with Marana Police Department, Banner University Medicine Primary Care Clinic, and Pima County Sheriff for access to storage / safe space in the event of a severe thunderstorm.

A health department staff member will act as a safety officer to identify any issues that arise and ensure it is safe to operate. All volunteers will report to this person.

Our public safety liaison will work with the Pima County Sheriff's Office and/or Marana Police Department to ensure security will be made available for any issues that arise.

Temperature checks will be mandatory for all staff reporting to the testing site. If there are irregularities the person will be retested after sitting in shade for 10 minutes. Persons with continued high temperatures will be asked to leave the premises.

Partners

Pima County Sheriff

Pima County Sheriff Auxiliary Volunteers

Corona de Tucson Fire Department

Testing Map with Ingress and Egress

- Pima County Fairgrounds, Thurber Hall, 113000 S Houghton Rd, Tucson AZ 85747



Oro Valley/Catalina Testing Site Plan

Address of site

- Coronado K-8 School, 3401 E Wilds Rd Tucson, AZ 85739

Staffing support

- 2 Sheriff Auxiliary Volunteer for security / traffic management
- 4 Health Dept staff for site management
- 8 volunteers for supply running, registration, general support

Logistics needs

- Signage for entrance, exit, site check in, general messaging, safety
- Traffic cones for lane separation and check points
- 4 tents with tie down and shade for workers
- Large coolers for sample storage including ice or plug in portable coolers
- 6 Tables
- 12 chairs
- Hydration and nutritional supplements
- Auxiliary power / generator including power strips, extension cords and other cabling
- 4 Laptops, 2 mifi, 4 clipboards, pens, paper, 1 large monitor for self-administration instructions and potentially a printer
- First aid and car kit

Number of appointments per site

- Total Population of area ~22,000 people
- 0-2000 tests estimate based on 10% of population

Operating hours

- Sunday, August 16th, 1000-1800

Messaging and communications plan

Social media campaign on Facebook, Nextdoor, local radio, municipality newsletter with appointment link for their location. Communications office will be brought in to handle this piece.

Safety and Inclement weather plan

Given the time of year we may experience a monsoon and need to plan accordingly. In the event of flooding or heavy rain, the county will work with Catalina State Park, local community health center, and public safety agencies for access to storage / safe space in the event of a severe thunderstorm.

A health department staff member will act as a safety officer to identify any issues that arise and ensure it is safe to operate. All volunteers will report to this person.

Our public safety liaison will work with the Pima County Sheriff's Office to ensure security will be made available for any issues that arise.

Temperature checks will be mandatory for all staff reporting to the testing site. If there are irregularities the person will be retested after sitting in shade for 10 minutes. Persons with continued high temperatures will be asked to leave the premises.

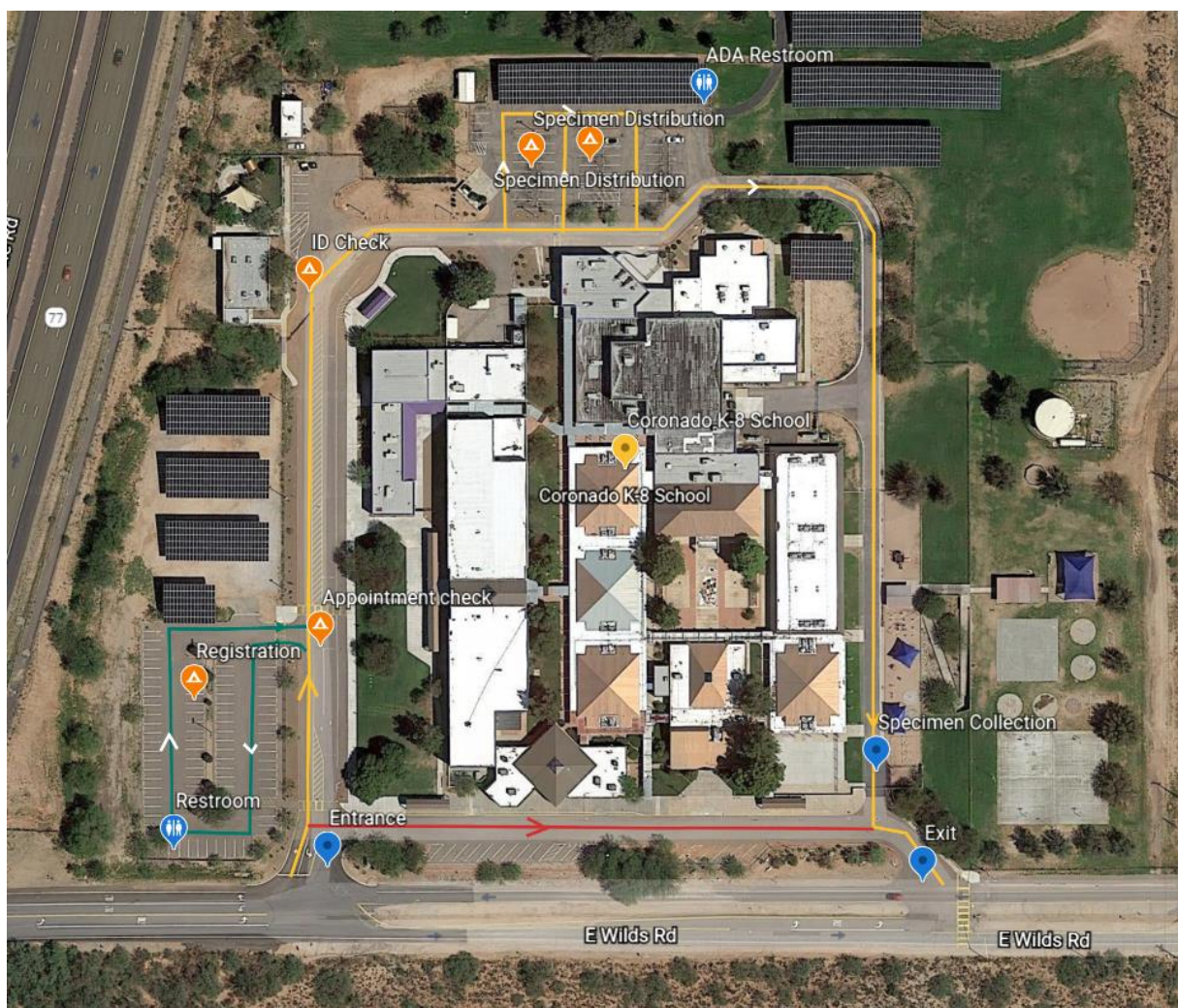
Partners

Pima County Sheriff

Golder Ranch Fire District

Testing Map with Ingress and Egress

- Coronado K-8 School, 3401 E Wilds Rd Tucson, AZ 85739



Rillito Race Track/City of Tucson Testing Site Plan

Address of site

- Rillito Race Track, 4502 N 1st Ave, Tucson, AZ 85718

Staffing support

- 2 Sheriff Auxiliary Volunteer for security / traffic management
- 4 Health Dept staff for site management
- 8 volunteers for supply running, registration, general support

Logistics needs

- Signage for entrance, exit, site check in, general messaging, safety
- Traffic cones for lane separation and check points
- 4 tents with tie down and shade for workers
- Large coolers for sample storage including ice or plug in portable coolers
- 6 Tables
- 12 chairs
- Hydration and nutritional supplements
- Auxiliary power / generator including power strips, extension cords and other cabling
- 4 Laptops, 2 mifi, 4 clipboards, pens, paper, 1 large monitor for self-administration instructions and potentially a printer
- First aid and car kit

Number of appointments per site

- Total Population of area ~35,000 people
- 0-2000 tests estimate based on 5% of population

Operating hours

- Monday, August 17th, 1000-1800

Messaging and communications plan

Social media campaign on Facebook, Nextdoor, local radio, municipality newsletter with appointment link for their location. Communications office will be brought in to handle this piece.

Safety and Inclement weather plan

Given the time of year we may experience a monsoon and need to plan accordingly. In the event of flooding or heavy rain, the county will work with Rillito Race Track, local community health center, and public safety agencies for access to storage / safe space in the event of a severe thunderstorm.

A health department staff member will act as a safety officer to identify any issues that arise and ensure it is safe to operate. All volunteers will report to this person.

Our public safety liaison will work with the Pima County Sheriff's Office to ensure security will be made available for any issues that arise.

Temperature checks will be mandatory for all staff reporting to the testing site. If there are irregularities the person will be retested after sitting in shade for 10 minutes. Persons with continued high temperatures will be asked to leave the premises.

Partners

Pima County Sheriff

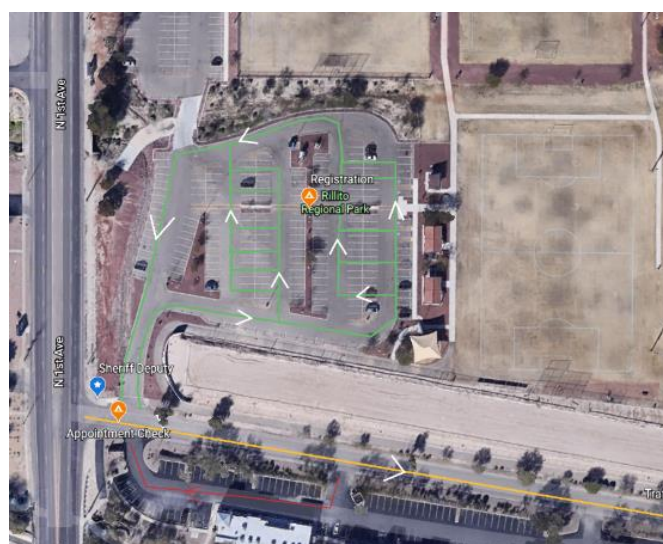
Tucson Fire Department

Testing Map with Ingress and Egress

- Rillito Race Track, 4502 N 1st Ave, Tucson, AZ 85718



Detailed View of Registration & Entrance:



Detailed view of specimen distribution site:



City of Tucson/ Sunnyside High School Testing Site Plan

Address of site

- Sunnyside High School, 1725 E Bilby Road, Tucson AZ 85706

Staffing support

- 2 Volunteer for security / traffic management
- 4 Health Dept staff for site management
- 8 volunteers for supply running, registration, general support

Logistics needs

- Signage for entrance, exit, site check in, general messaging, safety
- Traffic cones for lane separation and check points
- 4 tents with tie down and shade for workers
- Large coolers for sample storage including ice or plug in portable coolers
- 6 Tables
- 12 chairs
- Hydration and nutritional supplements
- Auxiliary power / generator including power strips, extension cords and other cabling
- 4 Laptops, 2 mifi, 4 clipboards, pens, paper, 1 large monitor for self-administration instructions and potentially a printer
- First aid and car kit

Number of appointments per site

- Total Population of area ~35,000 people
- 0-2000 tests estimate based on 5% of population

Operating hours

- Tuesday, August 18th, 1000-1800

Messaging and communications plan

Social media campaign on Facebook, Nextdoor, local radio, municipality newsletter with appointment link for their location. Communications office will be brought in to handle this piece.

Safety and Inclement weather plan

Given the time of year we may experience a monsoon and need to plan accordingly. In the event of flooding or heavy rain, the county will work with Rillito Race Track, local community health center, and public safety agencies for access to storage / safe space in the event of a severe thunderstorm.

A health department staff member will act as a safety officer to identify any issues that arise and ensure it is safe to operate. All volunteers will report to this person.

Our public safety liaison will work with the Pima County Sheriff's Office to ensure security will be made available for any issues that arise.

Temperature checks will be mandatory for all staff reporting to the testing site. If there are irregularities the person will be retested after sitting in shade for 10 minutes. Persons with continued high temperatures will be asked to leave the premises.

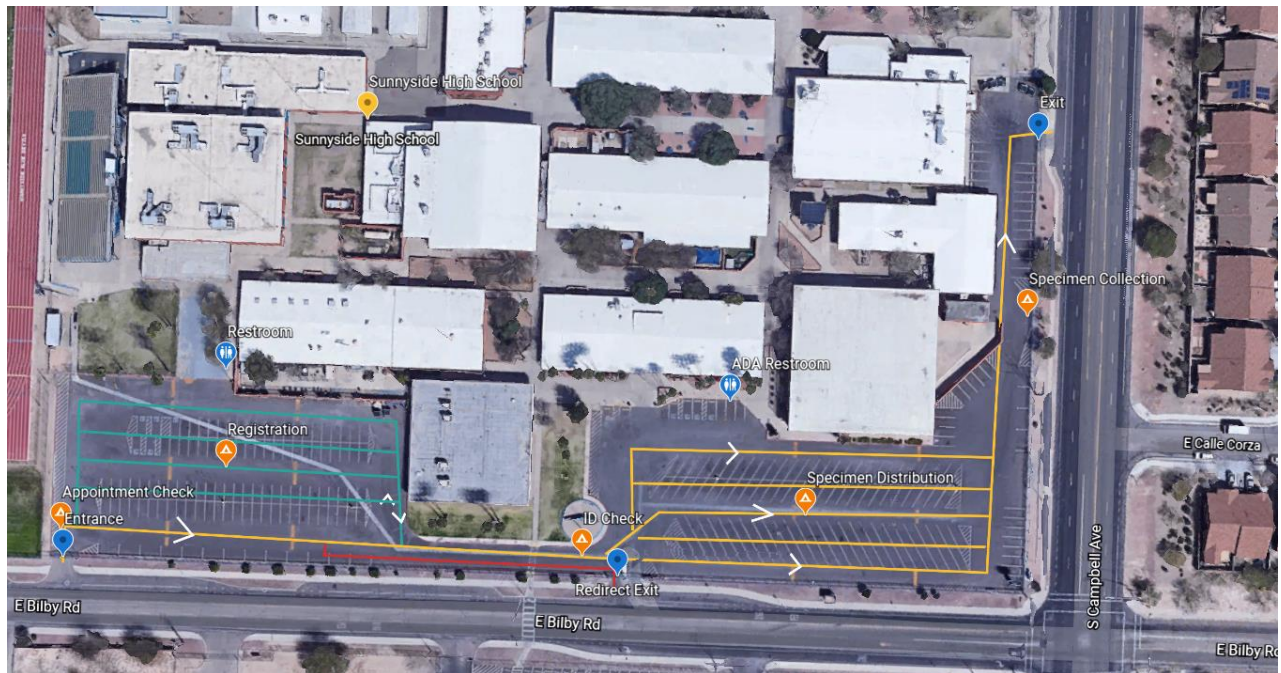
Partners

Tucson Police Department

Tucson Fire Department

Testing Map with Ingress and Egress

- Sunnyside High School, 1725 E Bilby Road, Tucson AZ 85706 – TO BE UPDATED



Tucson Rodeo Grounds Testing Site Plan

Address of site

- Tucson Rodeo Grounds, 4823 S 6th Ave Tucson, AZ 85714

Staffing support

- 2 Volunteer for security / traffic management
- 4 Health Dept staff for site management
- 8 volunteers for supply running, registration, general support

Logistics needs

- Signage for entrance, exit, site check in, general messaging, safety
- Traffic cones for lane separation and check points
- 4 tents with tie down and shade for workers
- Large coolers for sample storage including ice or plug in portable coolers
- 6 Tables
- 12 chairs
- Hydration and nutritional supplements
- Auxiliary power / generator including power strips, extension cords and other cabling
- 4 Laptops, 2 mifi, 4 clipboards, pens, paper, 1 large monitor for self-administration instructions and potentially a printer
- First aid and car kit

Number of appointments per site

- Total Population of area ~35,000 people
- 0-2000 tests estimate based on 5% of population

Operating hours

- Wednesday, August 19th, 1000-1800

Messaging and communications plan

Social media campaign on Facebook, Nextdoor, local radio, municipality newsletter with appointment link for their location. Communications office will be brought in to handle this piece.

Safety and Inclement weather plan

Given the time of year we may experience a monsoon and need to plan accordingly. In the event of flooding or heavy rain, the county will work with Rillito Race Track, local community health center, and public safety agencies for access to storage / safe space in the event of a severe thunderstorm.

A health department staff member will act as a safety officer to identify any issues that arise and ensure it is safe to operate. All volunteers will report to this person.

Our public safety liaison will work with the Pima County Sheriff's Office to ensure security will be made available for any issues that arise.

Temperature checks will be mandatory for all staff reporting to the testing site. If there are irregularities the person will be retested after sitting in shade for 10 minutes. Persons with continued high temperatures will be asked to leave the premises.

Partners

Tucson Police Department

Tucson Fire Department

Testing Map with Ingress and Egress

Tucson Rodeo Grounds, 4823 S 6th Ave Tucson, AZ 85714



