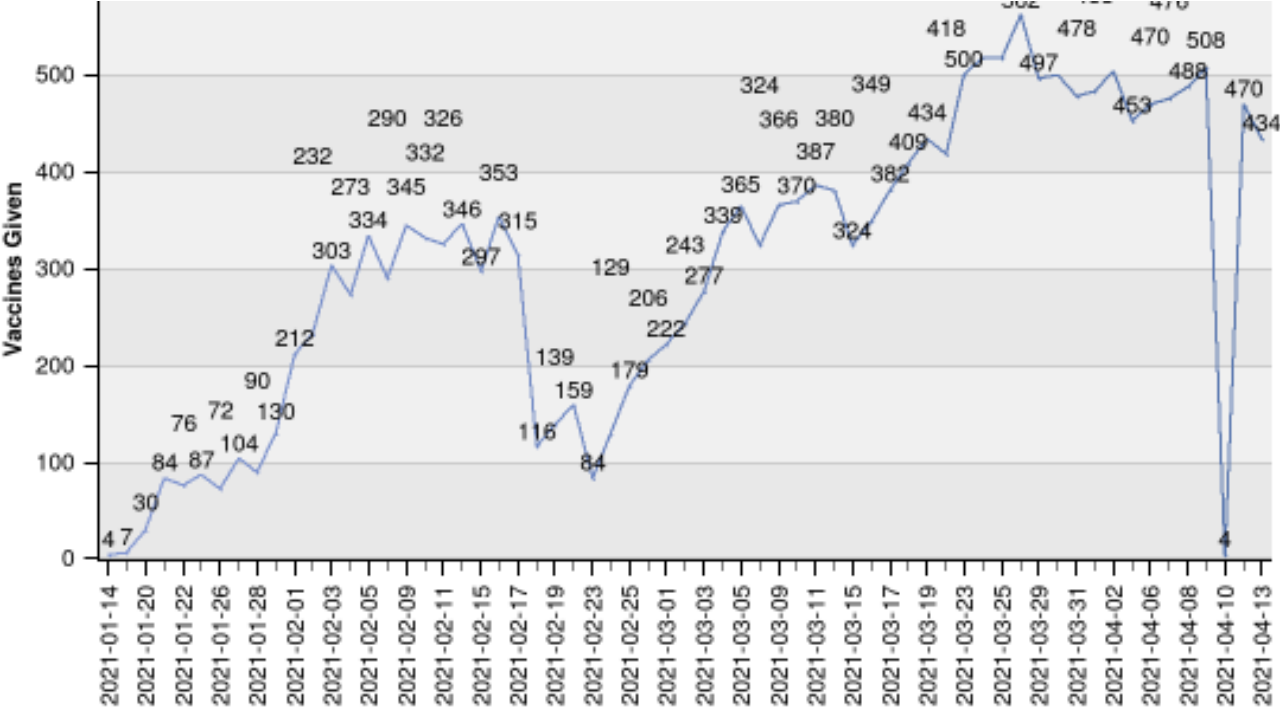


Immunizing in the Office Setting

Amy R. Nuñez, IT Director – Clinical Applications
COVID Tips Weekly Meeting
04/15/2021





MPHC Vaccine Clinics

6 **clinics**

13-15 **providers** (2-3 per location)

2 **MAs** per provider

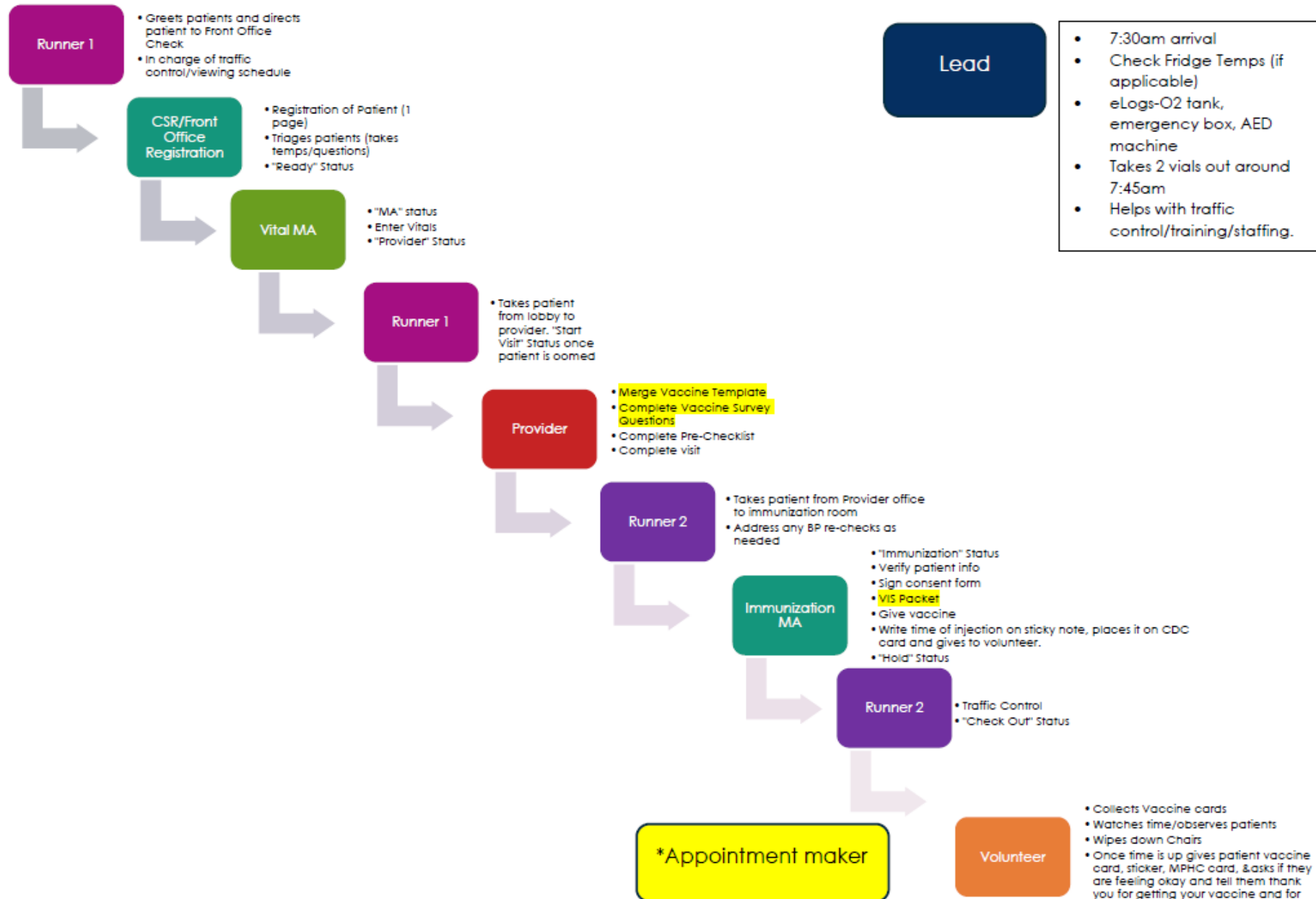
Averaging around **475 vaccines/day/total**

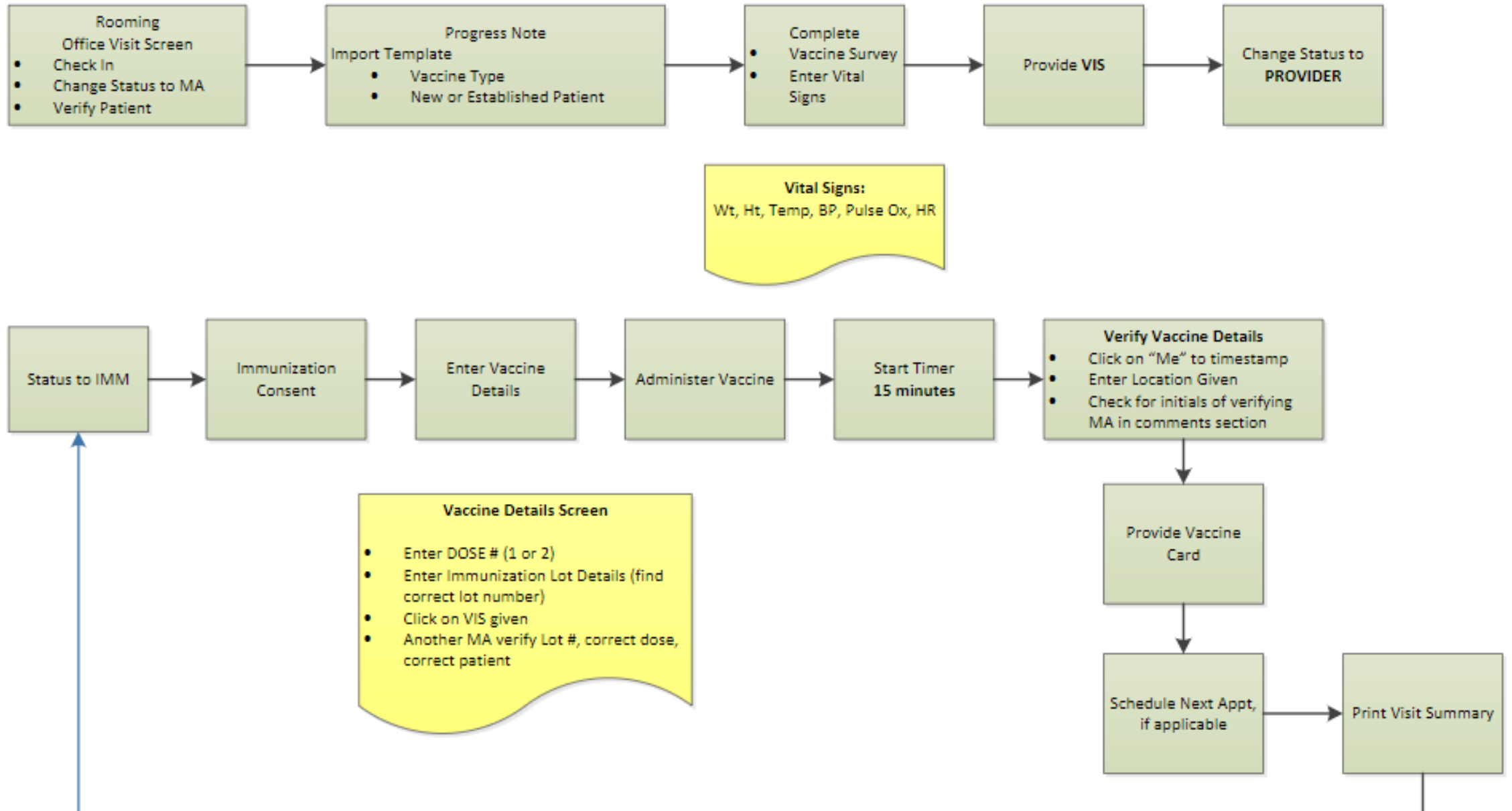
Exciting News!

Senator Mark Kelly stopped by our Baseline COVID-19 Vaccine Clinic to learn more about all the work we've done during the pandemic and help vaccinate some of our patients. Check out the article from the Arizona Republic [here](#) to read more about Senator Kelly's visit.



Roles and responsibilities at Vaccine Clinic





Scheduling Considerations

- **Vaccine Only vs Routine Visits**

- Depending on supply and gauging patient interest
- Outreach efforts
- Capacity constraints

- **Scheduling “Script”**

- Prioritize groups
- Standard appt type and appt reason



- **Leverage capabilities within EHR**

- Schedule templates
- Maximize slots
- Contactless Check In to reduce resources

Documentation and ASIIS

- **Vaccine Manufacturer Templates**

- To streamline orders and lot number accuracy
- Included:
 - CDC Checklist
 - Vaccine Survey
 - Assessment
 - Vaccine Order
 - Billing codes
- iPad Pilot for efficiency

- **Interface with ASIIS**

- Manual entry initially
- Seize opportunity to clean up ASIIS data/PINs
- Now – bi-directional interface

Eva was our 10,000th COVID-19 vaccine recipient! Pictured here with Dr. Curvan



Billing Challenges

- Plenty of manual work initially
- **Reimbursement fee** was increased which now reflects the manual work
- Obtaining the **Medicare ID numbers** for our Advantage patients
- Medicare has not paid yet, but other **payers are paying well**
- **Challenge to automate claims** as each Plan has different requirements with modifiers, place of service, admin codes



YOU are not alone!

- Lean on your networks
- Ask questions EVERYWHERE
- Contact (interest in a tour?):
 - Amy R. Nuñez, IT Director- Clinical Applications and Training
 - Mountain Park Health Center
 - anunez@mphc-az.org
 - Cell: 602-541-1303

